

COLLEGE EXPECTATIONS

QMC students are expected to demonstrate respect to staff, each other, the wider College community and neighbours, equipment and facilities:



ALWAYS BE RESPECTFUL
(BULLYING WILL NOT
BE TOLERATED)



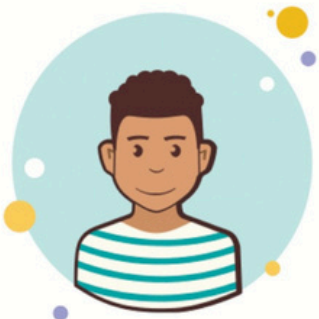
ALWAYS AIM FOR
FULL ATTENDANCE



STUDY HARD



BE PUNCTUAL TO
ALL LESSONS, MEETINGS
AND ENRICHMENTS



DRESS APPROPRIATELY
FOR COLLEGE
(AS YOU WOULD FOR WORK)



USE RESPECTFUL
LANGUAGE ON SITE



ONLY USE MOBILES IN
LESSONS IF
DIRECTED BY TUTORS



KEEP YOUR COLLEGE
CLEAN & TIDY



ALWAYS WEAR
YOUR LANYARD
AND ID



STAY SAFE ONLINE &
TREAT EQUIPMENT
WITH RESPECT



PLEASE DISMOUNT FROM
SKATEBOARDS/BIKES/SCOOTERS
WHEN ON CAMPUS



CONFINE SMOKING/VAPING
TO THE ONE
DESIGNATED AREA

We are committed to promoting mutual respect in everything we do and valuing every member of our community.

Our Expectations of Students at Queen Mary's College

At enrolment you will discuss and agree your subject choices with a tutor and sign a Learner Agreement form electronically. We want you to enjoy your programme and enable you to progress to your chosen destination, whether that is university, an apprenticeship or employment. We will support you every step of the way, but to achieve your best you must commit to your studies:

- **Full and consistent attendance at all your lessons and associated College activities which include, but are not limited to; tutorial, one to one appointments with your tutor, meetings with your teachers and other members of staff, enrichment activities, workshops, work experience, etc.**
- **Queen Mary's College offers programmes of study for students who want to continue in full-time education.** Full-time education is defined as a minimum of 15 hrs per week of taught sessions. We do not offer part-time study. We recommend that students take on no more than 10-12hrs of paid work per week to leave plenty of time for lessons and private study. Any benefits to which your family may be entitled, such as Child Benefit, are dependent on you continuing in full-time education.
- **Appropriate conduct at all times whilst on site, on a college offsite activity, on a college bus service, and in the surrounding neighbourhood.** We are very proud of our students who helped us to achieve an Ofsted rating of "Outstanding for Student Behaviours and Attitudes". Let's ensure we keep it that way!
- **Wearing your College ID on the College site.** ID provides access to the College campus and door entry systems for all buildings. You must always wear your ID. There is a £5 charge for a replacement card. It is vital that you report any loss or theft immediately to enable us to deactivate the card.
- **Engaging fully with mandatory work experience,** as appropriate to your course.

These points are non-negotiable. The most successful students are engaged and busy. Your tutor, teachers, support services, the Wellbeing Hub and Progress Hub are always available for study and emotional support.